

JC anatomy

Human Skeleton Products

1. Life-Size Skeleton Models 180cm
 - 1-1 Standard
 - 1-2 Professional
2. Half-Size Skeleton Models 88cm
 - 2-1 Standard
 - 2-2 Professional
3. Life-Size Skull Model
4. Half-Size Skull Model
5. Disarticulated Life-Size Skeleton Model
6. Anatomy Charts
 - 6-1 The Human Skeleton Chart
 - 6-2 Bones Chart with landmarks and definitions
 - 6-3 Muscles Chart with origins & insertions marks and definitions
7. Life-Size Spine and Vertebral Model
8. Life-Size Human Heart Model
9. Life-Size Human Torso Model

Life-Size Human Skeleton (Standard, 180cm)

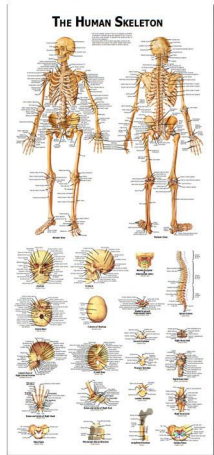
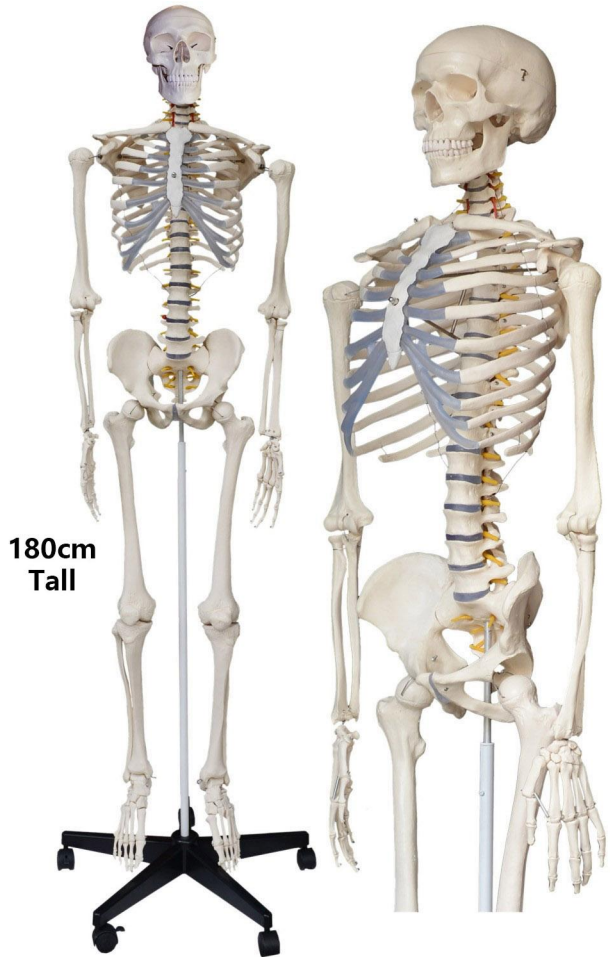


Chart 35*78cm



1, Height:

The model is about 165cm(65"), total height with base is about 180cm (70.8") tall.

2, Material:

*Model: High grade PVC

*Stand: Painted steel tube

*Base: ABS+PC, castor wheels, 2 of 5 are lockable

*Hardware: SST wires, SST screws

3, Chart:

Coated paper covered by matte film, clear, durable, 35*78cm

4, Base Dimensions: Dia 55cm (21.65")

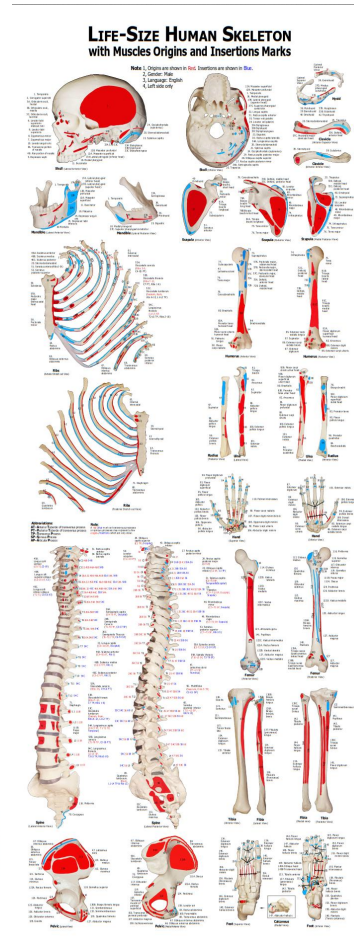
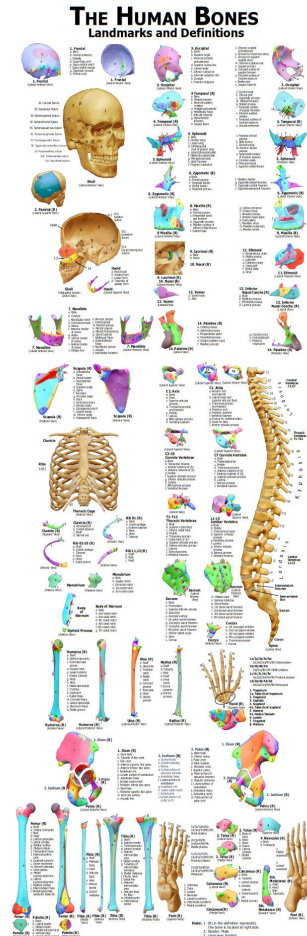
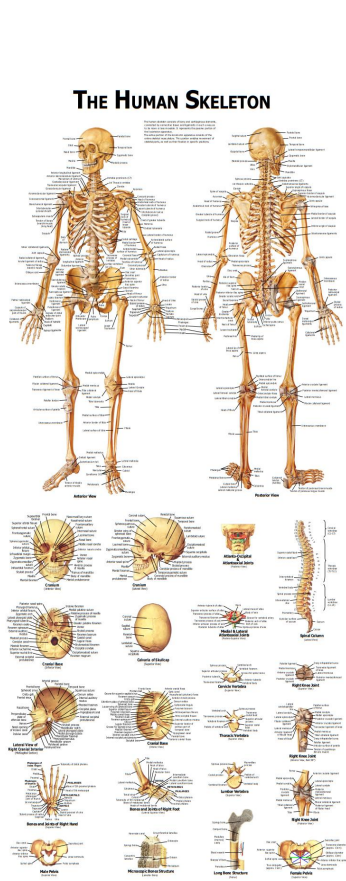
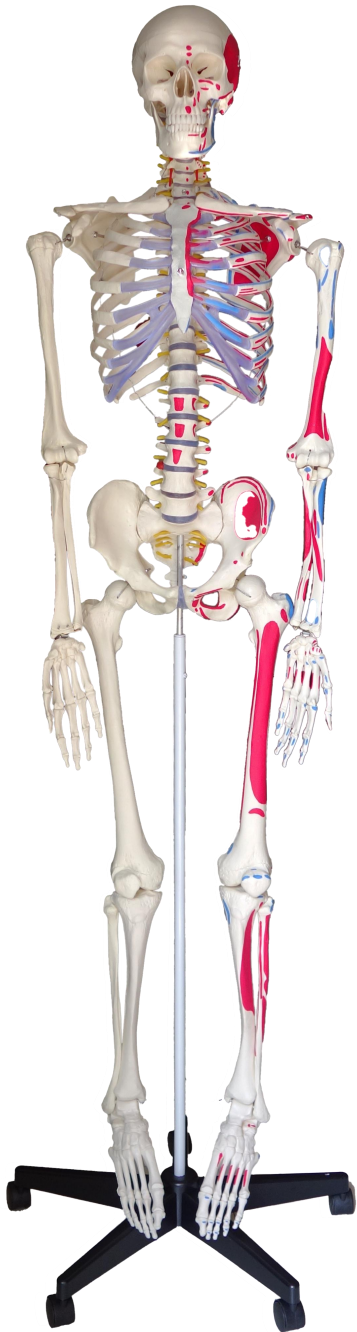
5, Net Weight: 8.8kgs / 19.4 lbs

Gross Weight: 10.6kgs / 23.4 lbs

6, Package Dimensions:

91cm * 38cm * 23cm / 35.8" * 15" * 9"

Life Size Human Skeleton (Pro, 180cm)



1, Height:

The model is about 165cm(65"), total height include base is about 180cm (70.8") tall.

2, Material:

*Model: High grade PVC

*Stand: Painted steel tube

*Base: ABS+PC, castor wheels, 2 of 5 are lockable*Hardware: SST wires, SST screws

3, Charts:

Chart A: Coated paper covered by matte film, clear, durable, 35*78cm

Chart B: Coated paper covered by matte film, clear, durable, 38*100cm

Chart C: Coated paper covered by matte film, clear, durable, 38*100cm

4, Base Dimensions: Dia 55cm (21.65")

5, Net Weight: 8.8kgs / 19.4 lbs

Gross Weight: 10.6kgs / 23.4 lbs

6, Package Dimensions: 91cm * 38cm *23cm /35.8" * 15" * 9"

88cm Miniature Skeleton Model (basic)

1, Height:

The model is about 88cm(34.5"), total height include base is about 90cm (35") tall.

2, Material:

- *Model: High grade PVC
- *Stand rod: plated steel
- *Base: ABS+PC
- *Hardware: SST screws

3, Chart:

Coated paper covered by matte film, clear, durable, 35*78cm

4, Base Dimensions:

352mm * 352mm * 33mm

5, Net Weight: 1kg / 2.2lbs

Gross Weight: 2.2kgs /4.8lbs

6, Package Dimensions:

44cm * 20cm *12cm /17.3" * 7.9" * 4.7"

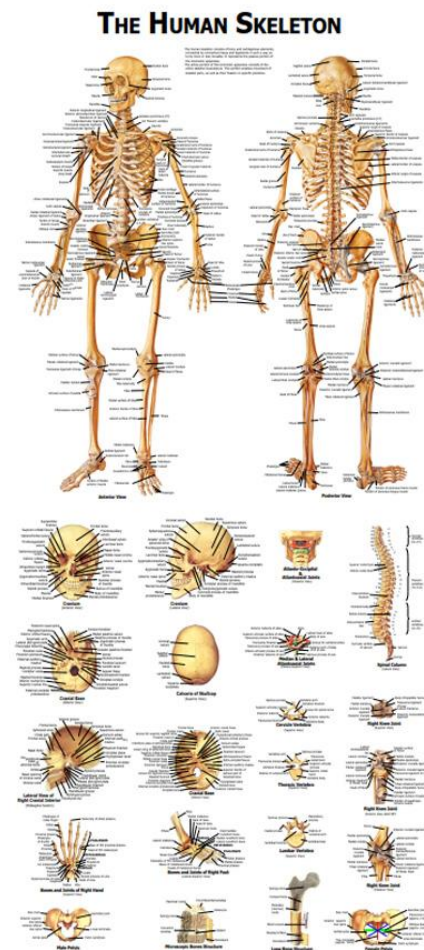
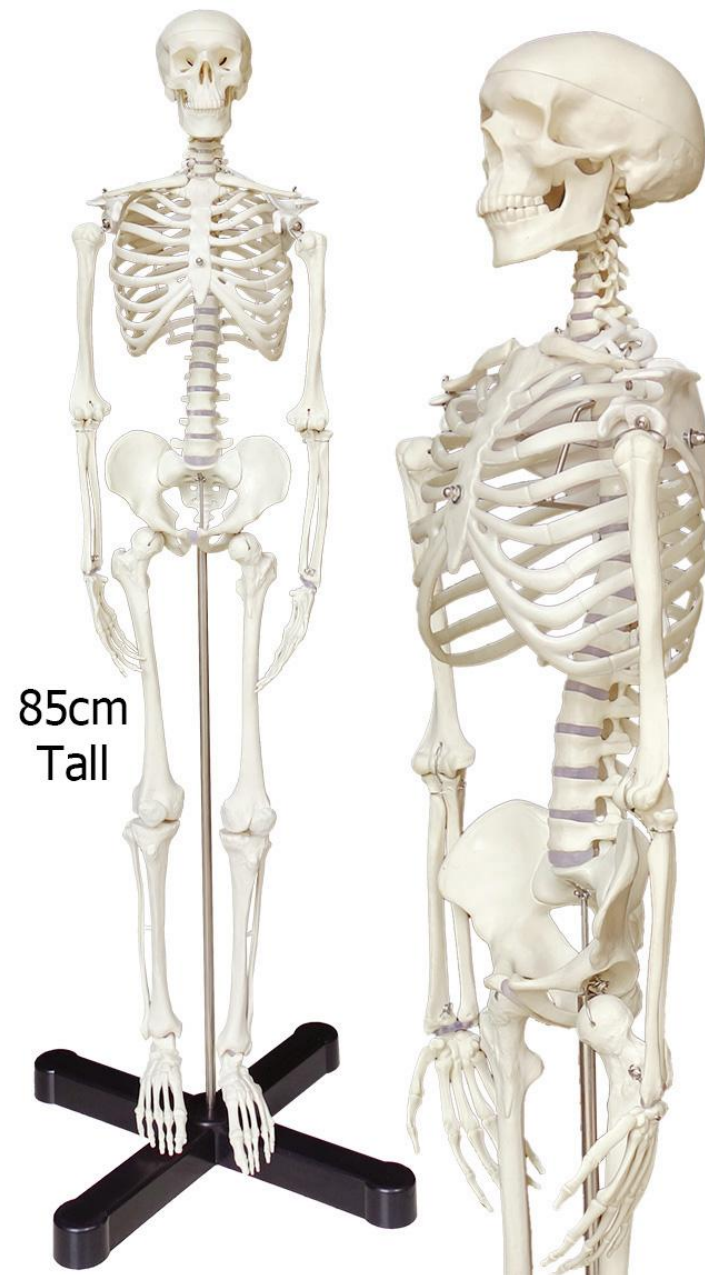


Chart 35*78cm



88cm Miniature Skeleton Model Pro

1, Height:

The model is about 88cm(34.5"), total height include base is about 90cm (35") tall.

2, Material:

*Model: High grade PVC

*Stand rod: plated steel

*Base: ABS+PC

*Hardware: SST screws

3, Chart:

Chart A: Coated paper covered by matte film, clear, durable, 35*78cm

Chart B: Coated paper covered by matte film, clear, durable, 38*100cm

Chart C: Coated paper covered by matte film, clear, durable, 38*100cm

4, Base Dimensions:

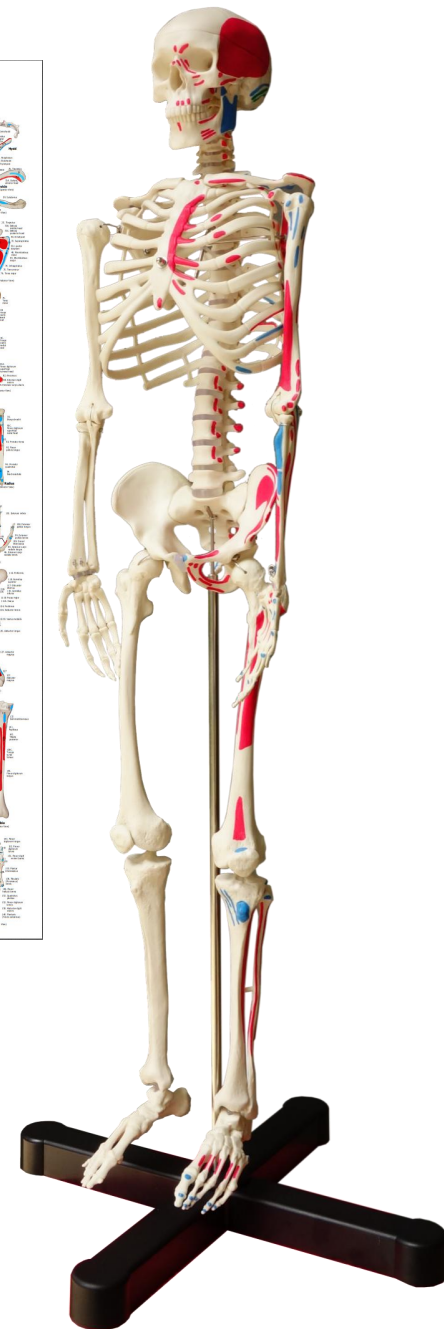
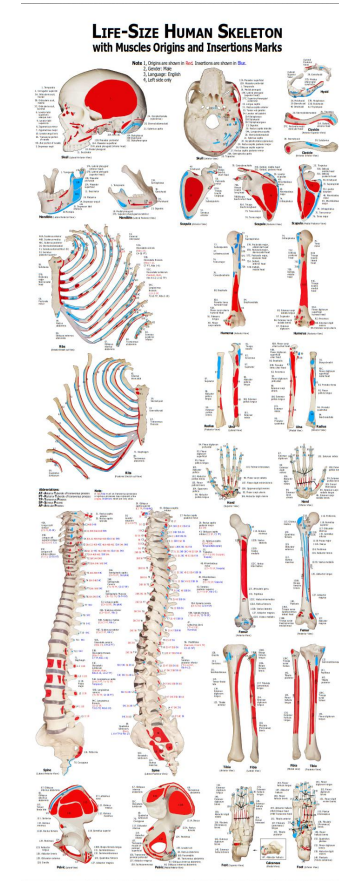
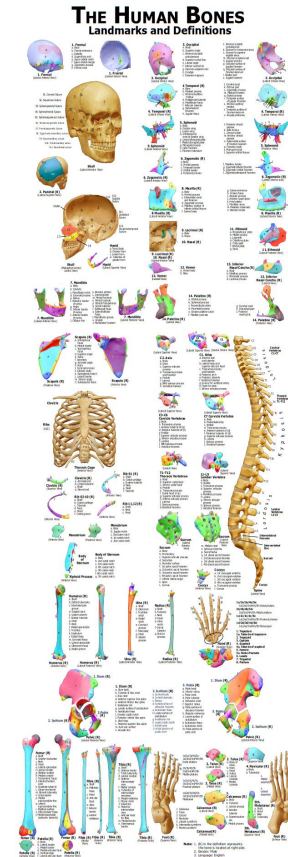
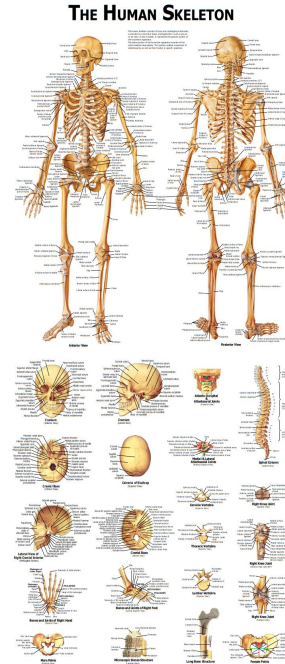
352mm * 352mm * 33mm

5, Net Weight: 1kg / 2.2lbs

Gross Weight: 2.2kgs /4.8lbs

6, Package Dimensions:

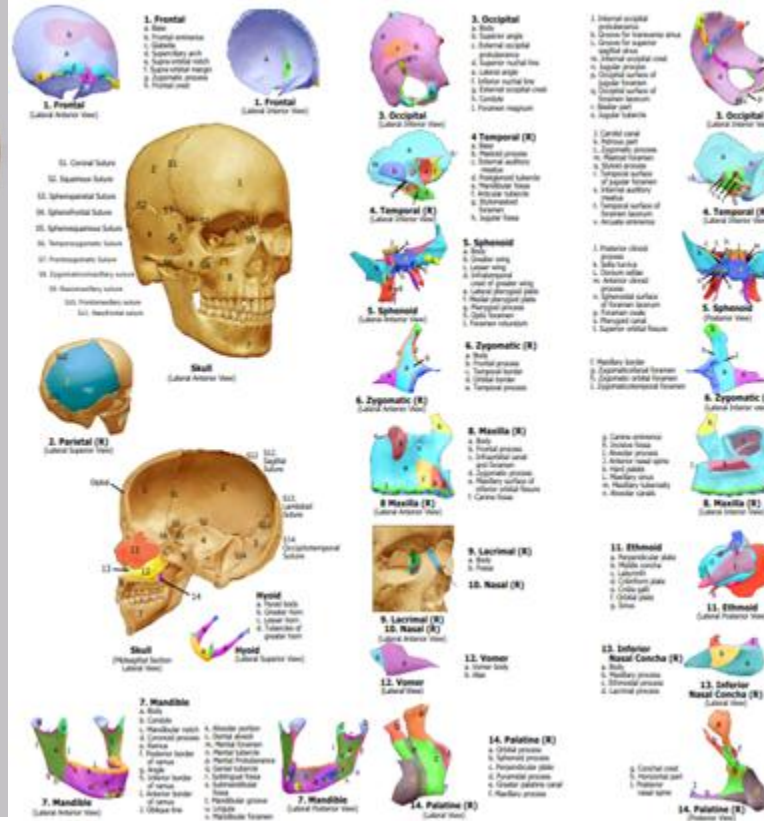
44cm * 20cm *12cm /17.3" * 7.9" * 4.7"



Life-Size Human Skull Model



THE HUMAN SKULL Landmarks and Definitions



1, Material:

*Model: High grade PVC

*Hardware: SST screws

2, Chart:

Coated paper covered by matte film, clear, durable

3, Net Weight: 806g / 1.77 lbs

Gross Weight: 975g / 2.15 lbs

4, Package Dimensions:

Inner Box: 23cm * 16cm * 17cm / 9" * 6.3" * 6.7"

Outer Carton, 16pcs /Ctn: 65.5cm × 48cm × 37.5cm

Half-Size Human Skull Model



1, Material:

- *Model: High grade PVC
- *Hardware: SST screws

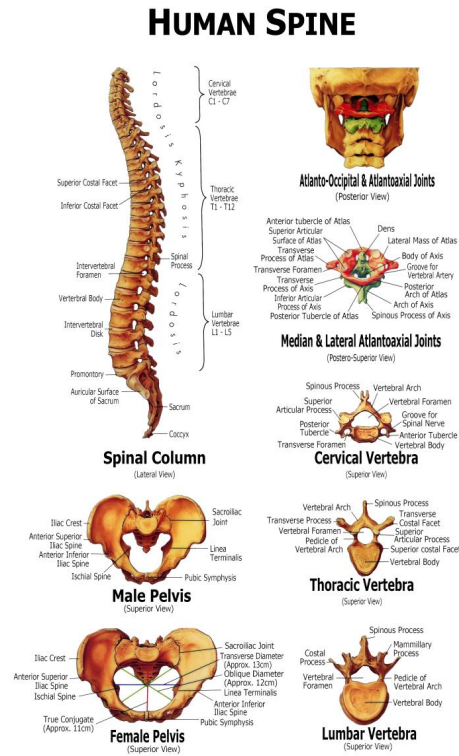
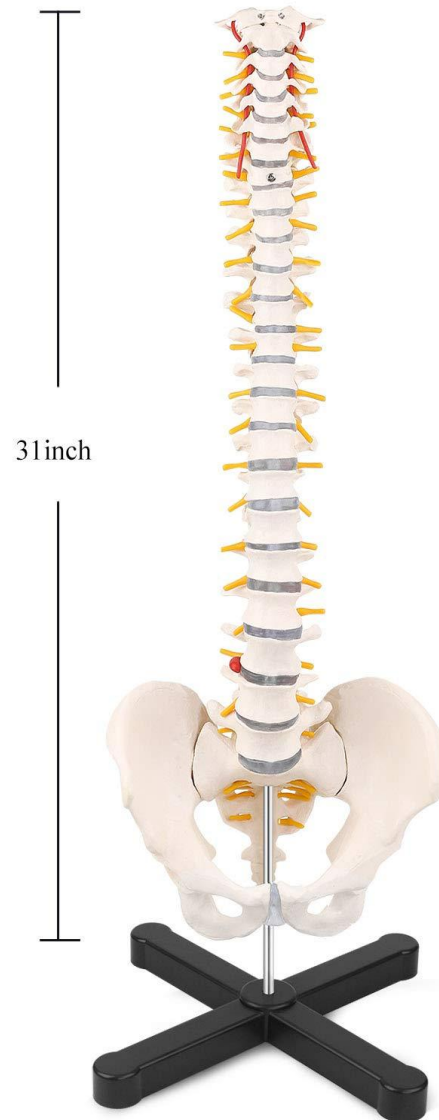
2, Net Weight: 121g

Gross Weight: 160g

3, Package Dimensions:

Inner Box: 10 * 8 * 8cm

Human Spine Column Model



1, Material:

*Model: High grade PVC, ABS+PC(Base)

*Hardware: SST, Al

2, Chart:

Coated paper covered by matte film, clear, durable

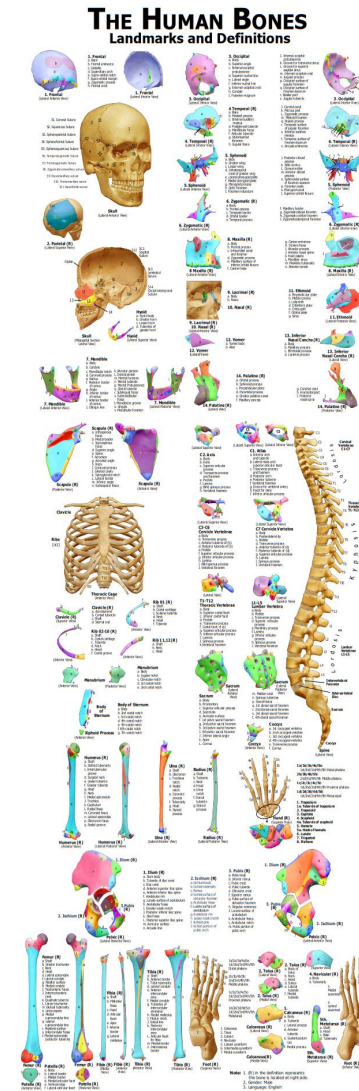
3, Net Weight: 2.1kg

Gross Weight: 2.4kg

4, Package Dimensions:

80cm * 30*cm *23cm

Disarticulated Human Skeleton Parts



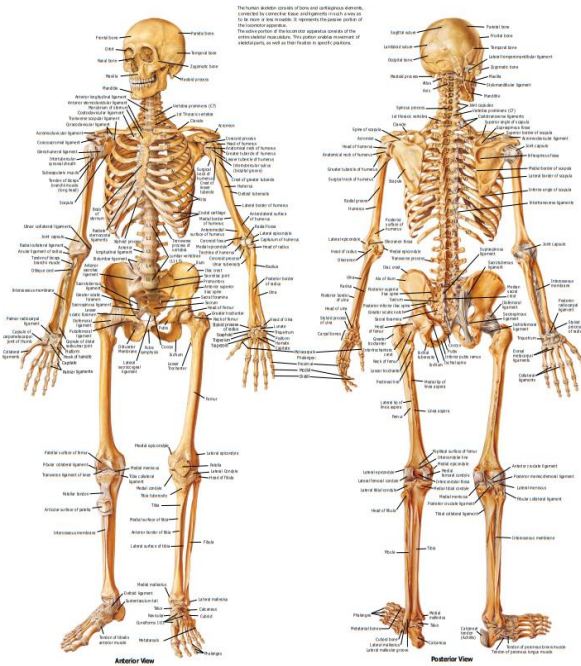
1, Material:
High grade PVC

2, Chart:

Coated paper covered by
matte film, clear, durable

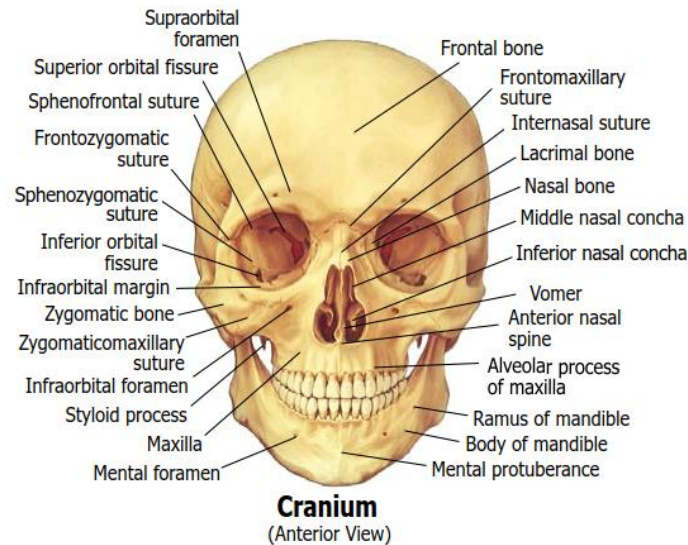
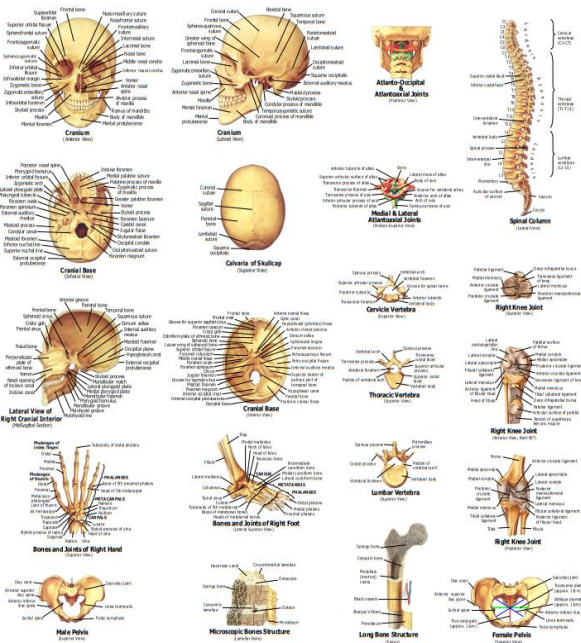
3, Net Weight: 6.8kg
Gross Weight: 7.0kg

THE HUMAN SKELETON

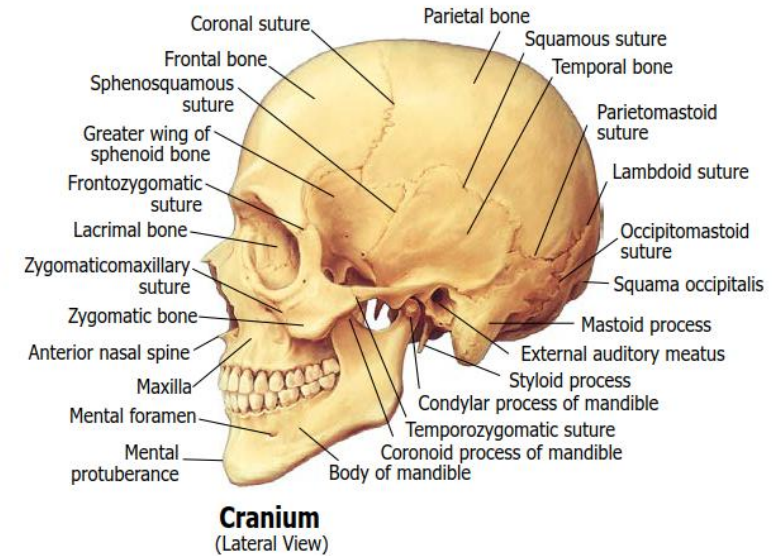


Human Skeleton Chart A

Coated paper covered by matte film, clear, durable, 35*78cm



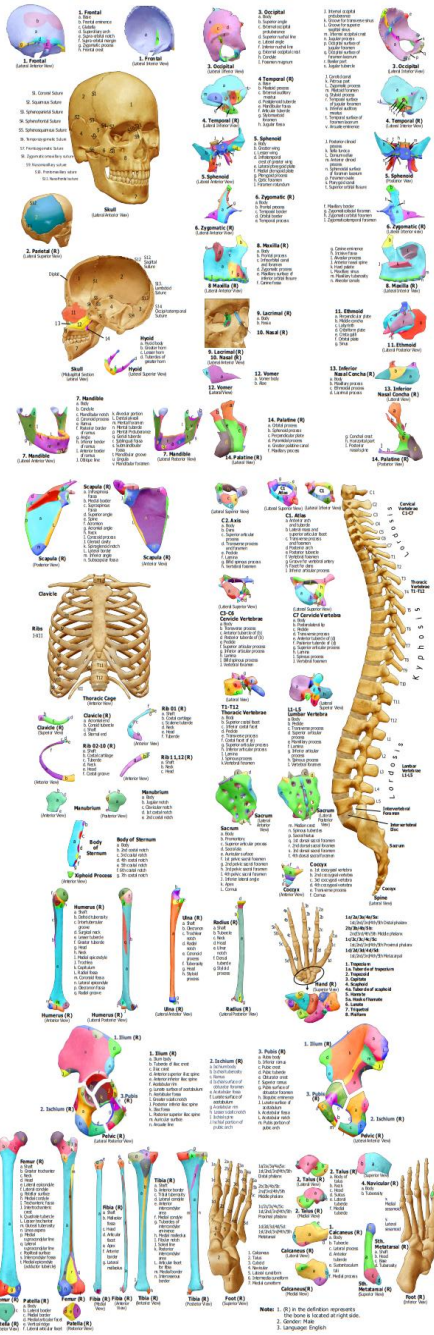
Cranium
(Anterior View)



Cranium
(Lateral View)

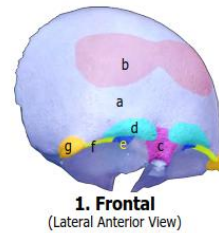
THE HUMAN BONES

Landmarks and Definitions



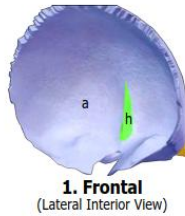
Human Bones Landmarks and Definitions

Coated paper covered by matte film, clear, durable, 38*100cm

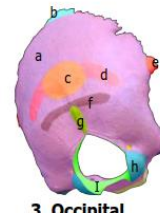


1. Frontal
(Lateral Anterior View)

- 1. Frontal**
a. Base
b. Frontal eminence
c. Glabella
d. Superciliary arch
e. Supra-orbital notch
f. Supra-orbital margin
g. Zygomatic process
h. Frontal crest



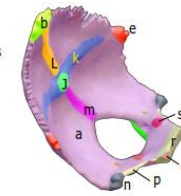
1. Frontal
(Lateral Interior View)



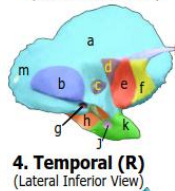
3. Occipital
(Lateral Inferior View)

- 3. Occipital**
a. Body
b. Superior angle
c. External occipital protuberance
d. Superior nuchal line
e. Lateral angle
f. Inferior nuchal line
g. External occipital crest
h. Condyle
i. Foramen magnum

- j. Internal occipital protuberance
k. Groove for transverse sinus
l. Groove for superior sagittal sinus
m. Internal occipital crest
n. Jugular process
p. Occipital surface of jugular foramen
q. Occipital surface of foramen lacerum
r. Basilar part
s. Jugular tubercle



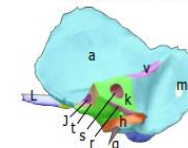
3. Occipital
(Lateral Interior View)



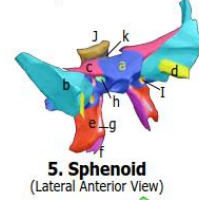
4. Temporal (R)
(Lateral Inferior View)

- 4 Temporal (R)**
a. Base
b. Mastoid process
c. External auditory meatus
d. Postglenoid tubercle
e. Mandibular fossa
f. Articular tubercle
g. Stylo mastoid foramen
h. Jugular fossa

- j. Carotid canal
k. Petrous part
l. Zygomatic process
m. Mastoid foramen
q. Styloid process
r. Temporal surface of jugular foramen
s. Internal auditory meatus
t. Temporal surface of foramen lacerum
v. Arcuate eminence



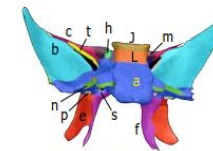
4. Temporal (R)
(Lateral Interior View)



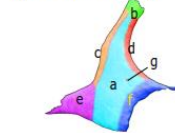
5. Sphenoid
(Lateral Anterior View)

- 5. Sphenoid**
a. Body
b. Greater wing
c. Lesser wing
d. Infratemporal crest of greater wing
e. Lateral pterygoid plate
f. Medial pterygoid plate
g. Pterygoid process
h. Optic foramen
i. Foramen rotundum

- j. Posterior clinoid process
k. Sella turcica
l. Dorsum sellae
m. Anterior clinoid process
n. Sphenoidal surface of foramen lacerum
p. Foramen ovale
s. Pterygoid canal
t. Superior orbital fissure



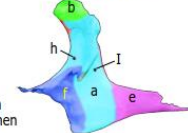
5. Sphenoid
(Posterior View)



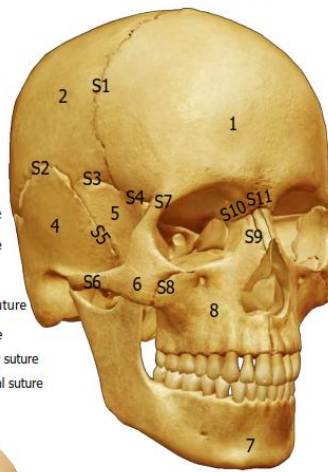
6. Zygomatic (R)
(Lateral Anterior View)

- 6. Zygomatic (R)**
a. Body
b. Frontal process
c. Temporal border
d. Orbital border
e. Temporal process

- f. Maxillary border
g. Zygomaticofacial foramen
h. Zygomatic orbital foramen
i. Zygomaticotemporal foramen

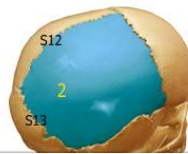


6. Zygomatic (R)
(Lateral Interior view)



Skull
(Lateral Anterior View)

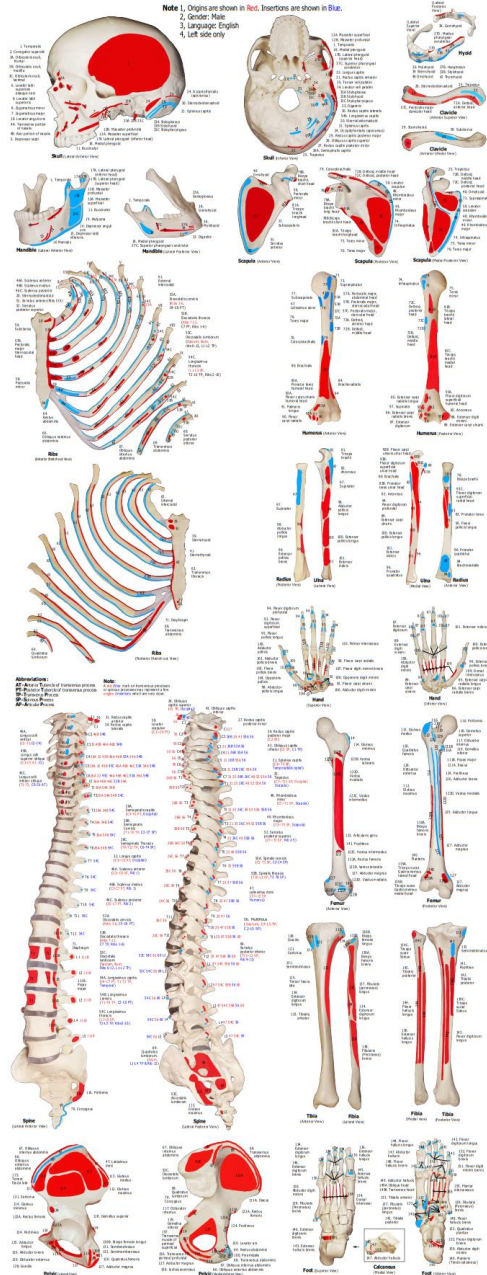
- S1. Coronal Suture
S2. Squamous Suture
S3. Sphenoparietal Suture
S4. Sphenofrontal Suture
S5. Sphenosquamous Suture
S6. Temporozygomatic Suture
S7. Frontozygomatic Suture
S8. Zygomaticomaxillary suture
S9. Nasomaxillary suture
S10. Frontomaxillary suture
S11. Nasofrontal suture



Note: 1, 2, 3, 4, 5, 6, 7, 8, 9, 10, 11, 12, 13, 14, 15, 16, 17, 18, 19, 20, 21, 22, 23, 24, 25, 26, 27, 28, 29, 30, 31, 32, 33, 34, 35, 36, 37, 38, 39, 40, 41, 42, 43, 44, 45, 46, 47, 48, 49, 50, 51, 52, 53, 54, 55, 56, 57, 58, 59, 60, 61, 62, 63, 64, 65, 66, 67, 68, 69, 70, 71, 72, 73, 74, 75, 76, 77, 78, 79, 80, 81, 82, 83, 84, 85, 86, 87, 88, 89, 90, 91, 92, 93, 94, 95, 96, 97, 98, 99, 100, 101, 102, 103, 104, 105, 106, 107, 108, 109, 110, 111, 112, 113, 114, 115, 116, 117, 118, 119, 120, 121, 122, 123, 124, 125, 126, 127, 128, 129, 130, 131, 132, 133, 134, 135, 136, 137, 138, 139, 140, 141, 142, 143, 144, 145, 146, 147, 148, 149, 150, 151, 152, 153, 154, 155, 156, 157, 158, 159, 160, 161, 162, 163, 164, 165, 166, 167, 168, 169, 170, 171, 172, 173, 174, 175, 176, 177, 178, 179, 180, 181, 182, 183, 184, 185, 186, 187, 188, 189, 190, 191, 192, 193, 194, 195, 196, 197, 198, 199, 200, 201, 202, 203, 204, 205, 206, 207, 208, 209, 210, 211, 212, 213, 214, 215, 216, 217, 218, 219, 220, 221, 222, 223, 224, 225, 226, 227, 228, 229, 230, 231, 232, 233, 234, 235, 236, 237, 238, 239, 240, 241, 242, 243, 244, 245, 246, 247, 248, 249, 250, 251, 252, 253, 254, 255, 256, 257, 258, 259, 260, 261, 262, 263, 264, 265, 266, 267, 268, 269, 270, 271, 272, 273, 274, 275, 276, 277, 278, 279, 280, 281, 282, 283, 284, 285, 286, 287, 288, 289, 290, 291, 292, 293, 294, 295, 296, 297, 298, 299, 300, 301, 302, 303, 304, 305, 306, 307, 308, 309, 310, 311, 312, 313, 314, 315, 316, 317, 318, 319, 320, 321, 322, 323, 324, 325, 326, 327, 328, 329, 330, 331, 332, 333, 334, 335, 336, 337, 338, 339, 340, 341, 342, 343, 344, 345, 346, 347, 348, 349, 350, 351, 352, 353, 354, 355, 356, 357, 358, 359, 360, 361, 362, 363, 364, 365, 366, 367, 368, 369, 370, 371, 372, 373, 374, 375, 376, 377, 378, 379, 380, 381, 382, 383, 384, 385, 386, 387, 388, 389, 390, 391, 392, 393, 394, 395, 396, 397, 398, 399, 400, 401, 402, 403, 404, 405, 406, 407, 408, 409, 410, 411, 412, 413, 414, 415, 416, 417, 418, 419, 420, 421, 422, 423, 424, 425, 426, 427, 428, 429, 430, 431, 432, 433, 434, 435, 436, 437, 438, 439, 440, 441, 442, 443, 444, 445, 446, 447, 448, 449, 450, 451, 452, 453, 454, 455, 456, 457, 458, 459, 460, 461, 462, 463, 464, 465, 466, 467, 468, 469, 470, 471, 472, 473, 474, 475, 476, 477, 478, 479, 480, 481, 482, 483, 484, 485, 486, 487, 488, 489, 490, 491, 492, 493, 494, 495, 496, 497, 498, 499, 500, 501, 502, 503, 504, 505, 506, 507, 508, 509, 510, 511, 512, 513, 514, 515, 516, 517, 518, 519, 520, 521, 522, 523, 524, 525, 526, 527, 528, 529, 530, 531, 532, 533, 534, 535, 536, 537, 538, 539, 540, 541, 542, 543, 544, 545, 546, 547, 548, 549, 550, 551, 552, 553, 554, 555, 556, 557, 558, 559, 560, 561, 562, 563, 564, 565, 566, 567, 568, 569, 570, 571, 572, 573, 574, 575, 576, 577, 578, 579, 580, 581, 582, 583, 584, 585, 586, 587, 588, 589, 590, 591, 592, 593, 594, 595, 596, 597, 598, 599, 600, 601, 602, 603, 604, 605, 606, 607, 608, 609, 610, 611, 612, 613, 614, 615, 616, 617, 618, 619, 620, 621, 622, 623, 624, 625, 626, 627, 628, 629, 630, 631, 632, 633, 634, 635, 636, 637, 638, 639, 640, 641, 642, 643, 644, 645, 646, 647, 648, 649, 650, 651, 652, 653, 654, 655, 656, 657, 658, 659, 660, 661, 662, 663, 664, 665, 666, 667, 668, 669, 670, 671, 672, 673, 674, 675, 676, 677, 678, 679, 680, 681, 682, 683, 684, 685, 686, 687, 688, 689, 690, 691, 692, 693, 694, 695, 696, 697, 698, 699, 700, 701, 702, 703, 704, 705, 706, 707, 708, 709, 710, 711, 712, 713, 714, 715, 716, 717, 718, 719, 720, 721, 722, 723, 724, 725, 726, 727, 728, 729, 730, 731, 732, 733, 734, 735, 736, 737, 738, 739, 740, 741, 742, 743, 744, 745, 746, 747, 748, 749, 750, 751, 752, 753, 754, 755, 756, 757, 758, 759, 760, 761, 762, 763, 764, 765, 766, 767, 768, 769, 770, 771, 772, 773, 774, 775, 776, 777, 778, 779, 780, 781, 782, 783, 784, 785, 786, 787, 788, 789, 790, 791, 792, 793, 794, 795, 796, 797, 798, 799, 800, 801, 802, 803, 804, 805, 806, 807, 808, 809, 810, 811, 812, 813, 814, 815, 816, 817, 818, 819, 820, 821, 822, 823, 824, 825, 826, 827, 828, 829, 830, 831, 832, 833, 834, 835, 836, 837, 838, 839, 840, 841, 842, 843, 844, 845, 846, 847, 848, 849, 850, 851, 852, 853, 854, 855, 856, 857, 858, 859, 860, 861, 862, 863, 864, 865, 866, 867, 868, 869, 870, 871, 872, 873, 874, 875, 876, 877, 878, 879, 880, 881, 882, 883, 884, 885, 886, 887, 888, 889, 890, 891, 892, 893, 894, 895, 896, 897, 898, 899, 900, 901, 902, 903, 904, 905, 906, 907, 908, 909, 910, 911, 912, 913, 914, 915, 916, 917, 918, 919, 920, 921, 922, 923, 924, 925, 926, 927, 928, 929, 930, 931, 932, 933, 934, 935, 936, 937, 938, 939, 940, 941, 942, 943, 944, 945, 946, 947, 948, 949, 950, 951, 952, 953, 954, 955, 956, 957, 958, 959, 960, 961, 962, 963, 964, 965, 966, 967, 968, 969, 970, 971, 972, 973, 974, 975, 976, 977, 978, 979, 980, 981, 982, 983, 984, 985, 986, 987, 988, 989, 990, 991, 992, 993, 994, 995, 996, 997, 998, 999, 1000.

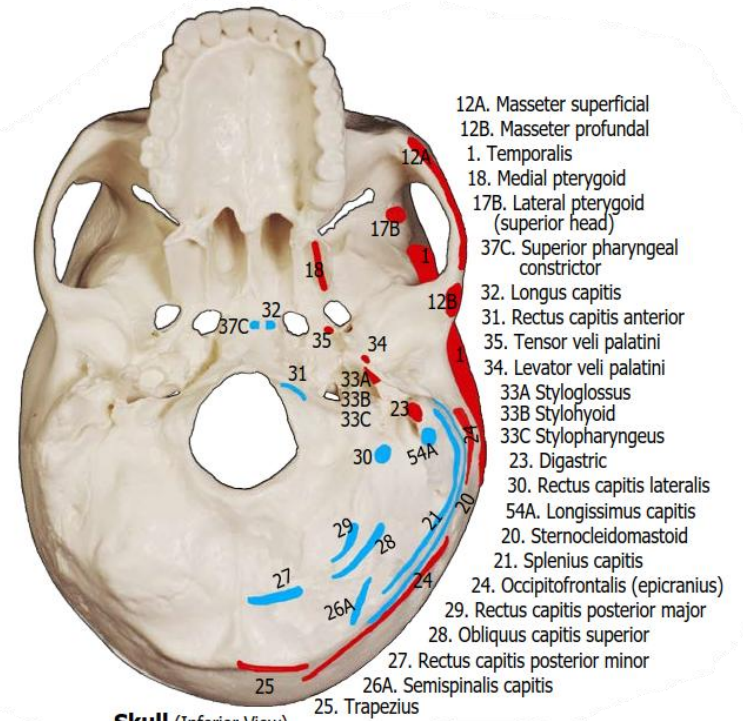
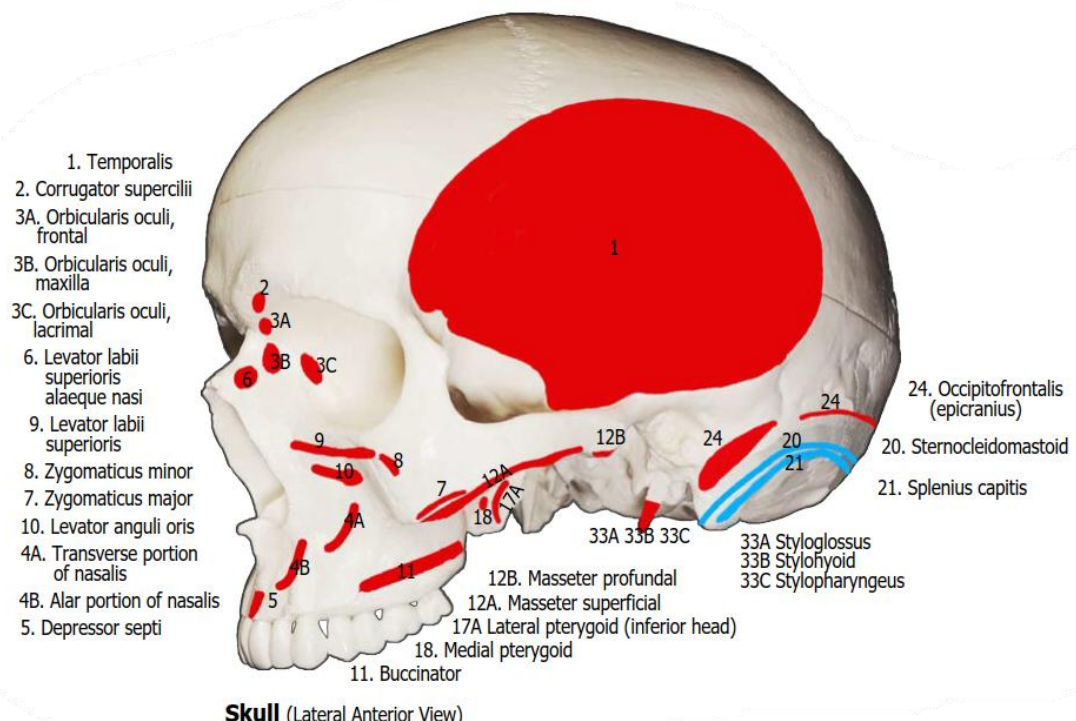
LIFE-SIZE HUMAN SKELETON
with Muscles Origins and Insertions Marks

Note: 1. Origins are shown in Red. Insertions are shown in Blue.
2. Gender: Male
3. Language: English
4. Left side only



Muscles chart - Shows 400+ muscles origins and insertions with marks & definitions

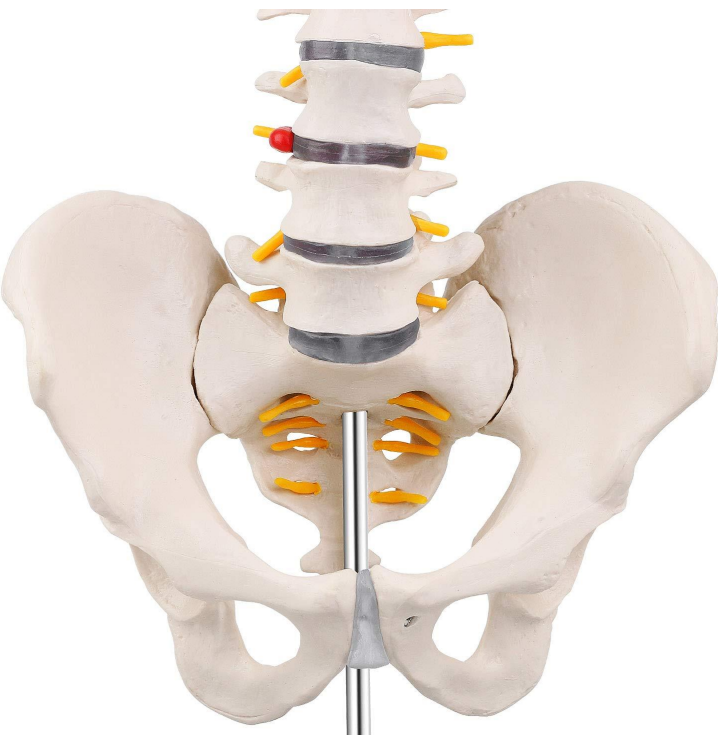
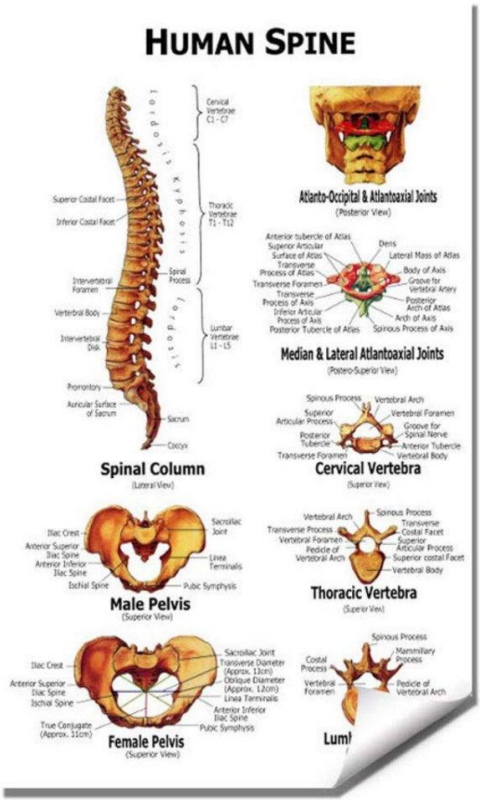
Coated paper covered by matte film, clear, durable, 38*100cm



SPINE AND VERTEBRAL MODEL

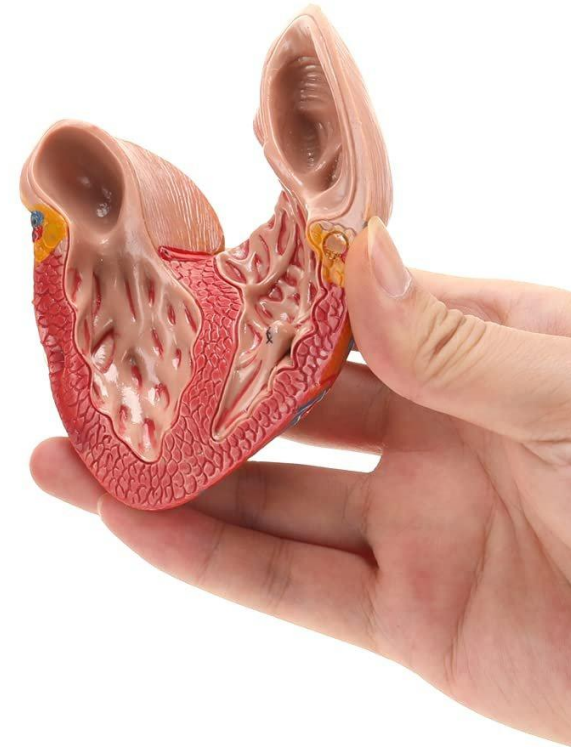
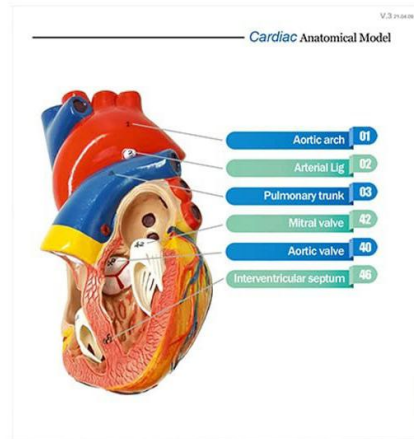
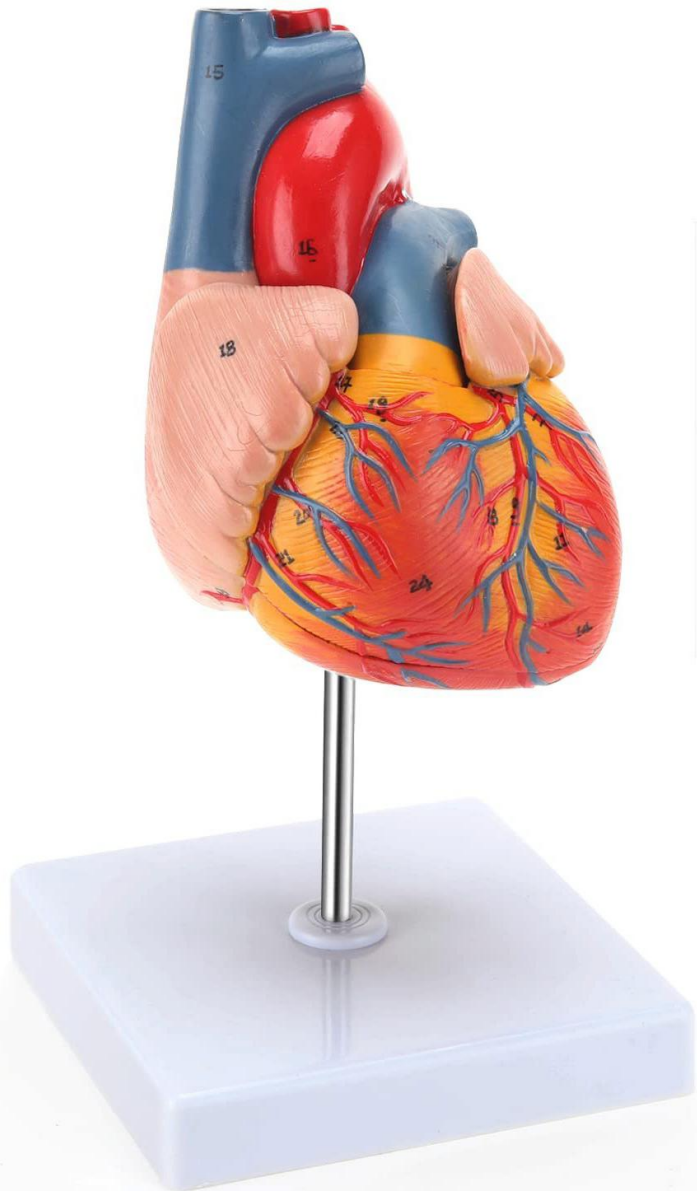
Life-size spine model with nerve roots, a lumbar disc herniation model, and a vertebral artery model

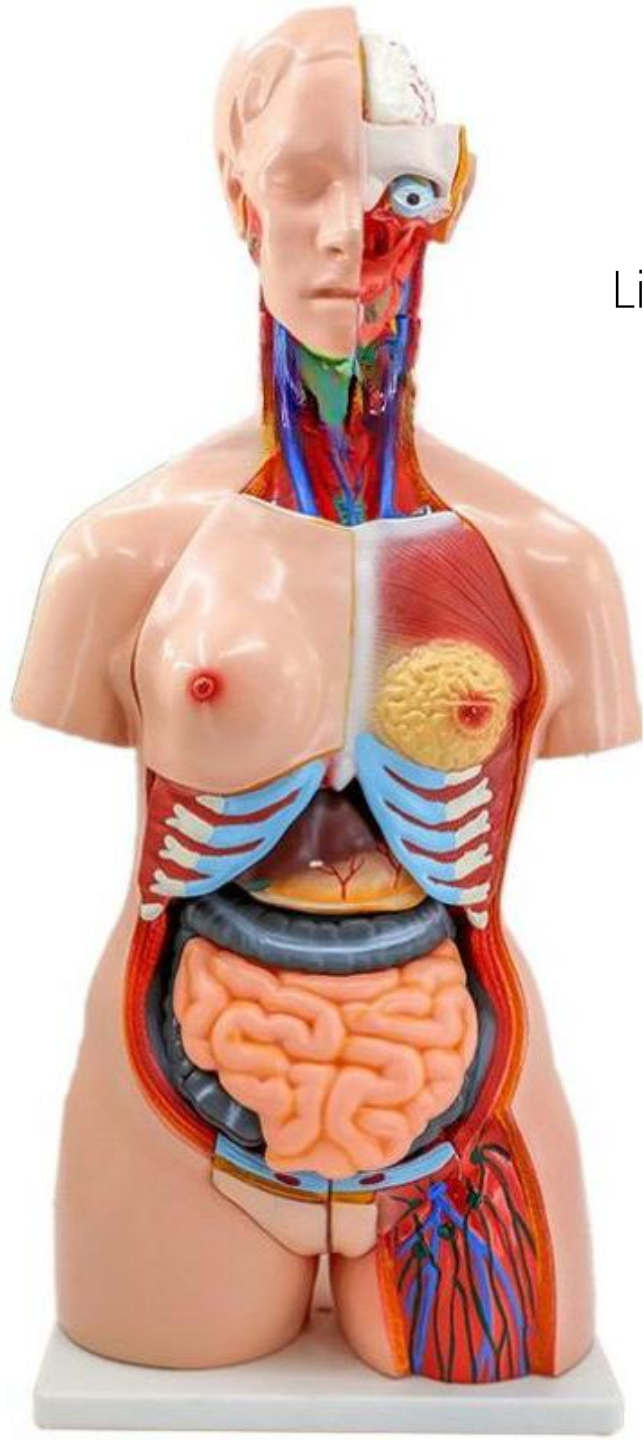
79cm
31"



HUMAN HEART MODEL

Life-size human heart models, 2-parts, connected by magnets





LIFE-SIZE HUMAN TORSO MODEL

Life-size human torso model,
85cm tall, 32pcs

